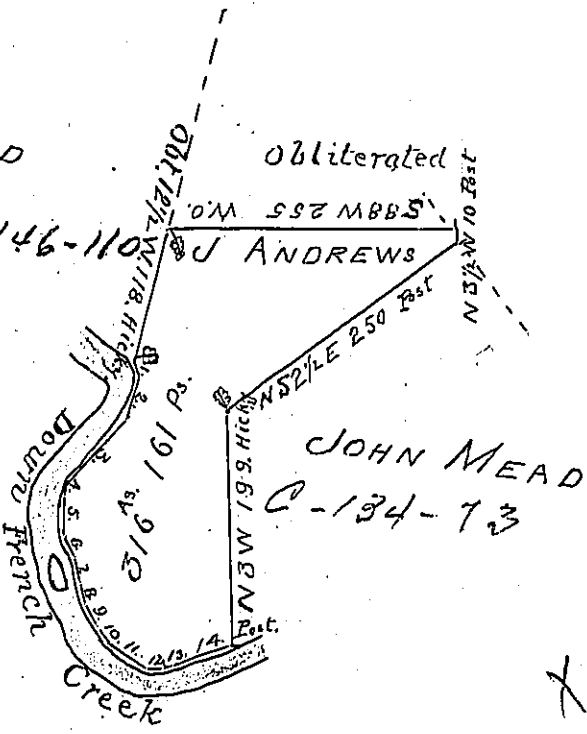


Courses and Distances obt.  
French Creek.

- No 1. S 20 obt. 12 perches,  
 " 2. N 15 " 40.  
 " 3. S 41 " 72.  
 " 4. S 21 " 8.  
 " 5. south. 37.  
 " 6. S 30 E. 20  
 " 7. S 21 E. 24.  
 " 8. S 14 E. 18.  
 " 9. S 29 E. 22.  
 " 10. S 42 E. 18.  
 " 11. S 59 E. 41.  
 " 12. East. 11.  
 " 13. N 72 E. 10.  
 " 14. N 68 E 52. to a Post.



The above is the Draft of a Tract of Land in Sugar Creek Township Venango County on French creek adjoining to Lands of John Mead, Elizabeth Mead & George Brown Surveyed October 3<sup>d</sup> 1804 in pursuance of a Warrant granted to John Andrews, bearing date 28<sup>th</sup> of August 1804.

Saml Dale D-S  
 To Samuel Cochran Esqr  
 Surveyor General.

IN TESTIMONY that the above is a copy of the original remaining on file in the Department of Internal Affairs of Pennsylvania, made conformably to an Act of Assembly approved the 16th day of February, 1833, I have hereunto set my Hand and caused the Seal of said Department to be affixed at Harrisburg, this twelfth day of October 1903.

*Geo. P. Brown*  
 Secretary of Internal Affairs.